

*** NOTE**

The IR format of the DV-C6760 has been changed from NEC format (well-known as YAMAHA NEC format) to Philips RC6 format. Attached is an example of the set up process using Pronto(ProntoEdit) or RAV-2000(RAVedit). Please see instructions.

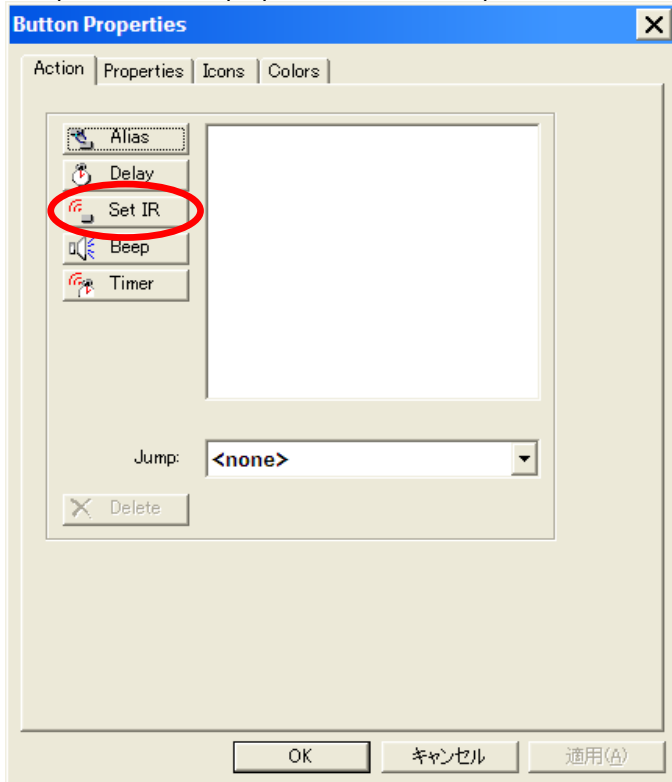
DV-C6760					
Function	Extended I/R(RC6 format)				IR codes for Pronto(ProntoEdit)/RAV-2000(RAVedit)
	Decimal		Hexadecimal		
	Predifined format				
POWER ON	004	063	04	3F	6000 0000 0000 0001 0004 003f
POWER OFF	004	142	04	8E	6000 0000 0000 0001 0004 008e
DISC RANDOM	004	164	04	A4	6000 0000 0000 0001 0004 00a4
PROGRAM	004	251	04	FB	6000 0000 0000 0001 0004 00fb
PLAY NORMAL	004	165	04	A5	6000 0000 0000 0001 0004 00a5
DISC REPEAT	004	166	04	A6	6000 0000 0000 0001 0004 00a6
REPEAT OFF	004	167	04	A7	6000 0000 0000 0001 0004 00a7

INSTRUCTION

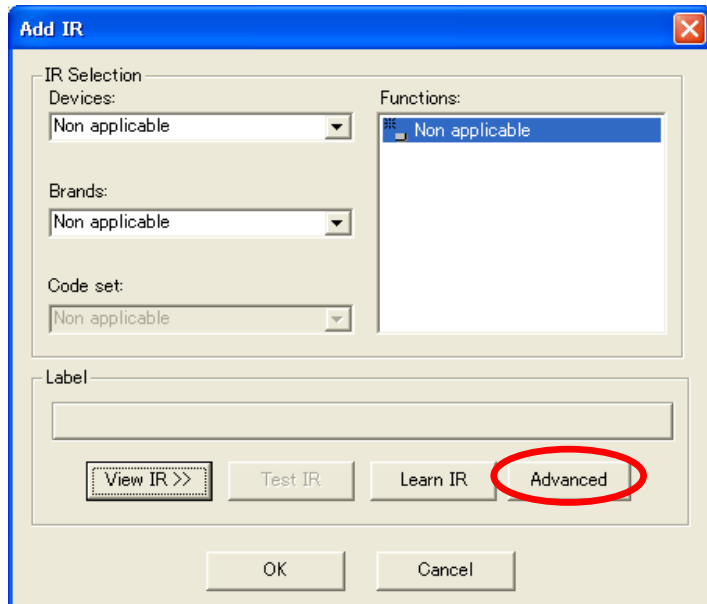
<< For Pronto(TSU-1000/2000/6000) by using ProntoEdit >>

* NOTE : The following steps are for those who have sufficient experience using ProntoEdit.

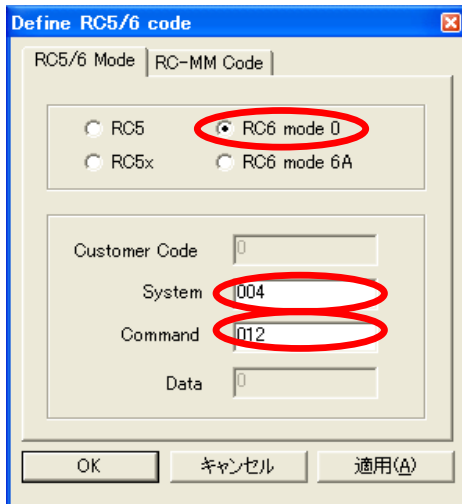
1. Open the Button properties window and push Set IR button.



2. Push the Advanced button.



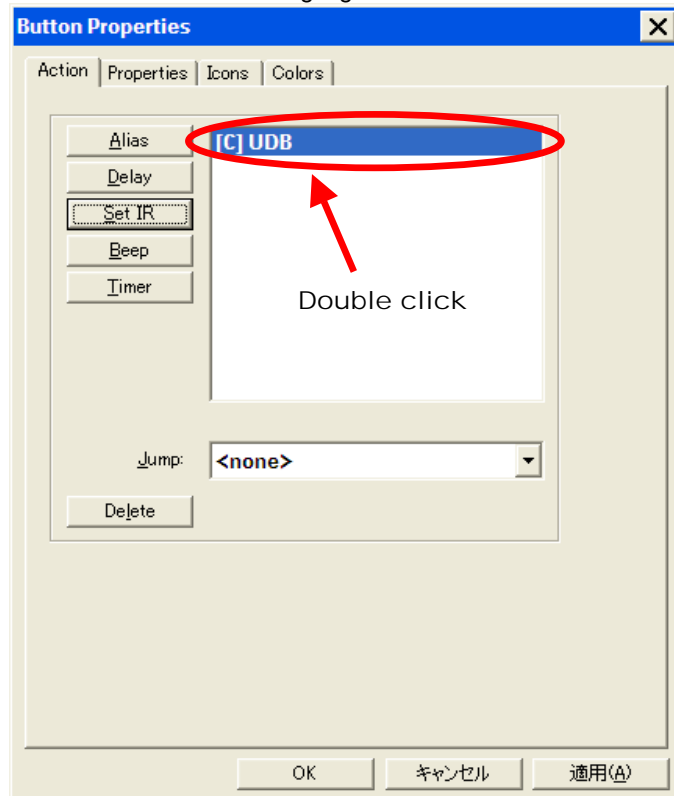
3. Select the RC6 mode 0 and Enter **DECIMAL IR code** in the IR chart. The IR code can then be set.



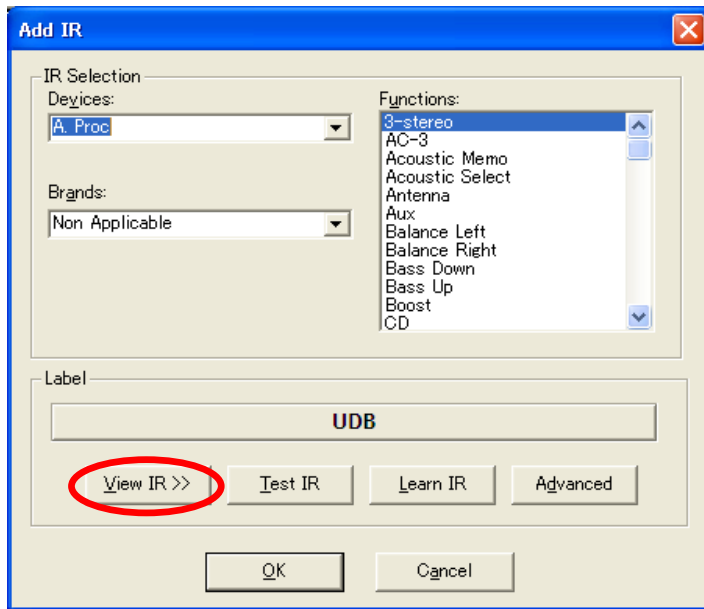
<< For RAV-2000 by using RAVedit ver 1.0.0 >>

* NOTE : The following steps are for those who have sufficient experience using RAVedit.

1. Open the Button properties window to display the existing IR code, and double click the highlighted area to set another IR code.



2. Push the View IR button.



3. Enter Predefined code in the IR chart and push OK button. The IR code can then be set.

